



AUSTRALIAN LOT FEEDERS' ASSOCIATION

## MEDIA RELEASE

21 August 2025

# Australian Grain Fed Beef Sector Reaches New Heights

- **Numbers of cattle on feed in Australia has reached 1.58 million head**
- **Feedlot capacity has surpassed 1.7 million head for the first time in history**

Australia's grain fed beef sector continues its strong growth trajectory, with the number of cattle on feed reaching 1.58 million head and national feedlot capacity reaching a record 1.7 million head, according to the June 2025 quarterly feedlot survey released by the Australian Lot Feeders' Association (ALFA) and Meat & Livestock Australia (MLA).

ALFA President, Grant Garey said that industry has continued to invest in long term growth of the Australian grainfed sector.

"This marks the fifth consecutive quarter of growth for Australian feedlots. The sector's role in delivering consistent, high-quality beef to both domestic and international markets has never been more important," Mr Garey said.

Feedlots continue to be utilised as part of long-standing programs supplying consistent beef to a range of markets. Additionally, the use of feedlots as a finishing and quality tool, alongside the systems adoption for drought mitigation has caused a subsequent lift in utilisation, with national pens 93% full, another record.

Grainfed cattle turnoff also hit a new high, with 894,178 head processed which drove record production and export volumes. More cattle are being placed into longer-fed programs, contributing to a significant lift in quarterly grainfed beef output.

National comparisons over 5-years show the change in the feedlot system. Numbers on feed have lifted 38%, capacity has lifted 23% and turnoff is up 13%, while grainfed exports are up 42%.

"The continued expansion in capacity and utilisation reflects strong confidence in the sector. As we break new records, Australian grainfed beef continues to find demand in global markets," Mr Garey said.

MLA Acting Market Information Manager Erin Lukey noted that while input costs have risen, global demand remains robust.

Australia exported 112,935 tonnes of grain fed beef, up 25% on June 2024 volumes, which at the time was a record. Grainfed beef made up 29% of total exports as non-grainfed production remains firm.

"Australia consumes a relatively stable volume of grainfed beef, meaning that record turnoff and production, results in a subsequent record export volume. Global demand for grainfed beef remains solid as competition from the US continues to face reduced production.

"Australia exported grainfed beef to 51 countries over the quarter, the most diverse mix of markets since 2017.

China's share of Australian exports continues to grow, now accounting for 35% of total exports. Japan and South Korea remain key trading partners, contributing 26% and 18% respectively.

Recognising the increasing importance of the feedlot sector, MLA introduced the National Feeder Heifer Indicator (NFHI), addressing a significant visibility gap in the market. This new metric tracks saleyard throughput of feeder heifers—a major component of feedlot purchases.

In the last quarter, lot feeders faced a rising market, with competition intensifying. Saleyard throughput for feeder steers and heifers declined by 6% and 11% respectively, reducing the availability of stock. As a result, prices rose by 6–7% over the same period.

"As southern production systems rebuild, competition is expected to intensify, particularly from restocker buyers," said Ms Lukey.

**ENDS.**

#### **Media Enquiries:**

Jack Johnston  
MLA Corporate Affairs and Media Manager  
[media@mla.com.au](mailto:media@mla.com.au)  
0407 282 971

Grant Garey  
ALFA President  
[info@feedlots.com.au](mailto:info@feedlots.com.au)  
(02) 9290 3700

## NUMBERS ON FEED

Quarter	NSW	VIC	QLD	SA	WA	Total
Jun-25	471,767	72,170	893,280	71,072	70,886	1,579,175
Mar-25	442,735	69,613	851,190	71,060	62,727	1,497,325
Jun-24	385,127	60,351	853,439	69,711	49,564	1,418,192

## TURNOFF

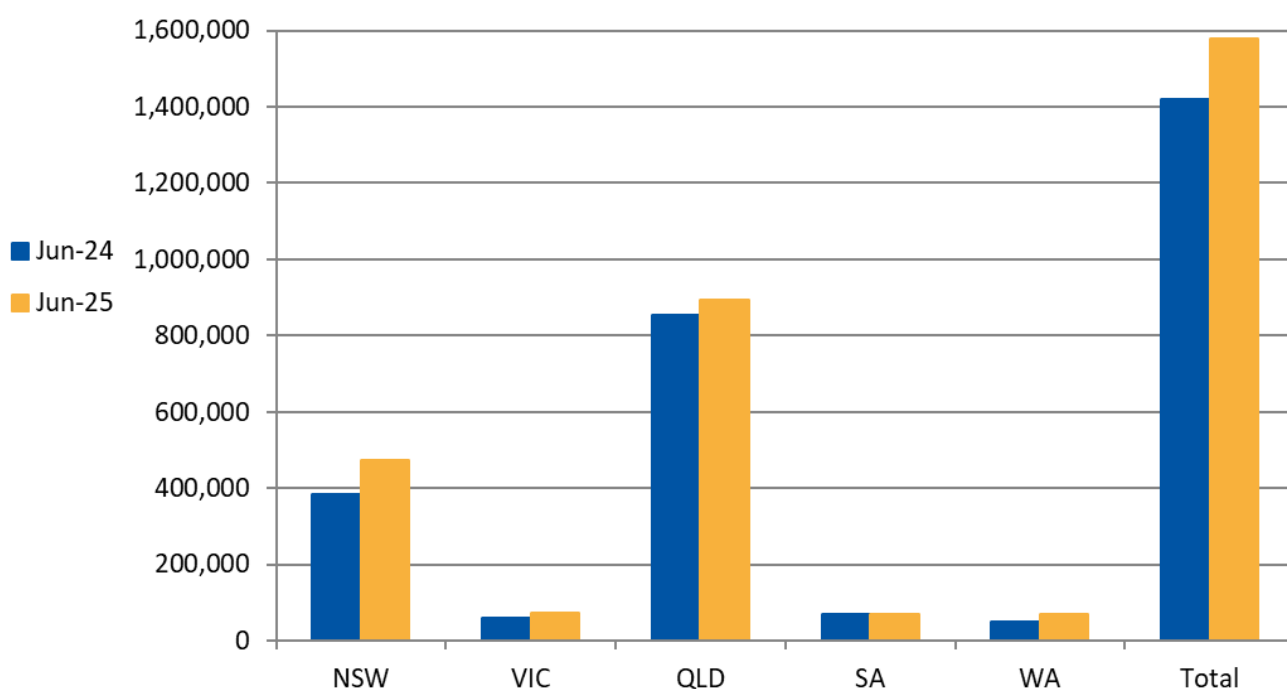
Quarter	NSW	VIC	QLD	SA	WA	Total
Jun-25	220,841	40,831	537,548	46,349	48,609	894,178
Mar-25	227,314	46,580	484,714	48,770	51,235	858,613
Jun-24	160,454	42,130	454,403	43,309	33,800	734,096

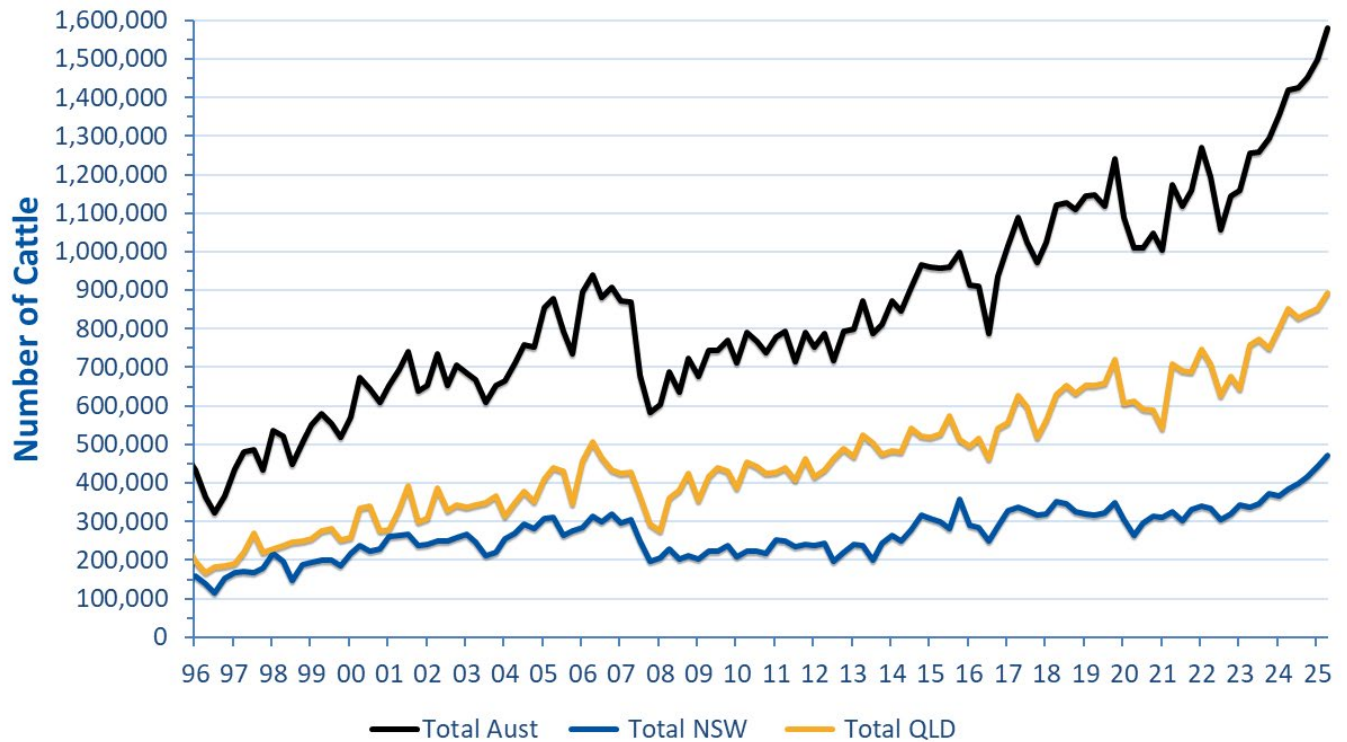
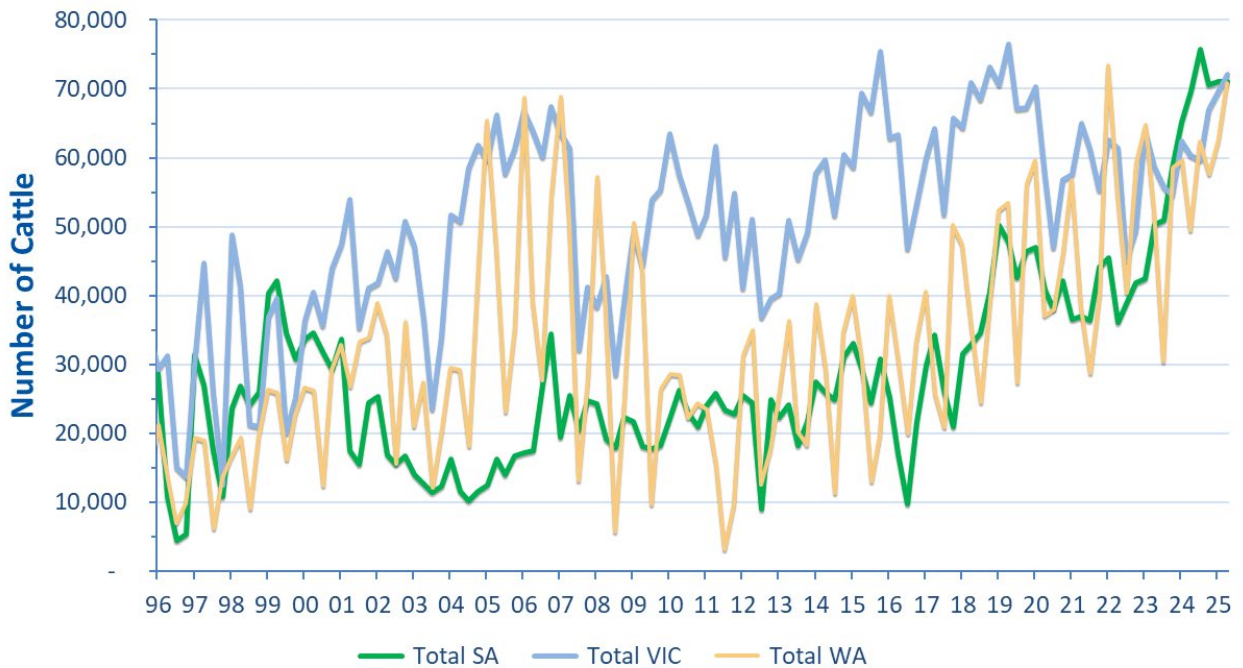
## CAPACITY

Quarter	NSW	VIC	QLD	SA	WA	Total
Jun-25	494,396	86,196	957,648	77,618	90,414	1,706,272
Mar-25	486,999	84,513	918,607	77,618	88,764	1,656,501
Jun-24	464,439	84,575	930,365	75,015	83,314	1,637,708

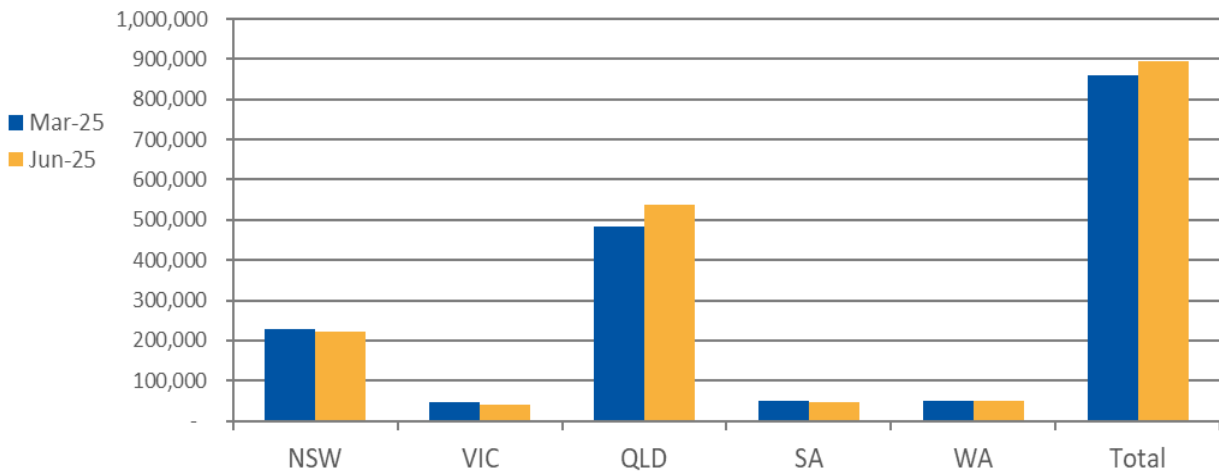
**Source:** Feedlot Capacity figures are provided by AUS-MEAT Limited (AUS-MEAT). AUS-MEAT owns and administers the National Feedlot Accreditation Scheme (NFAS) on behalf of ALFA and the feedlot sector. Actual Feedlot Capacity figures are reported under the NFAS.

## NUMBERS ON FEED YoY

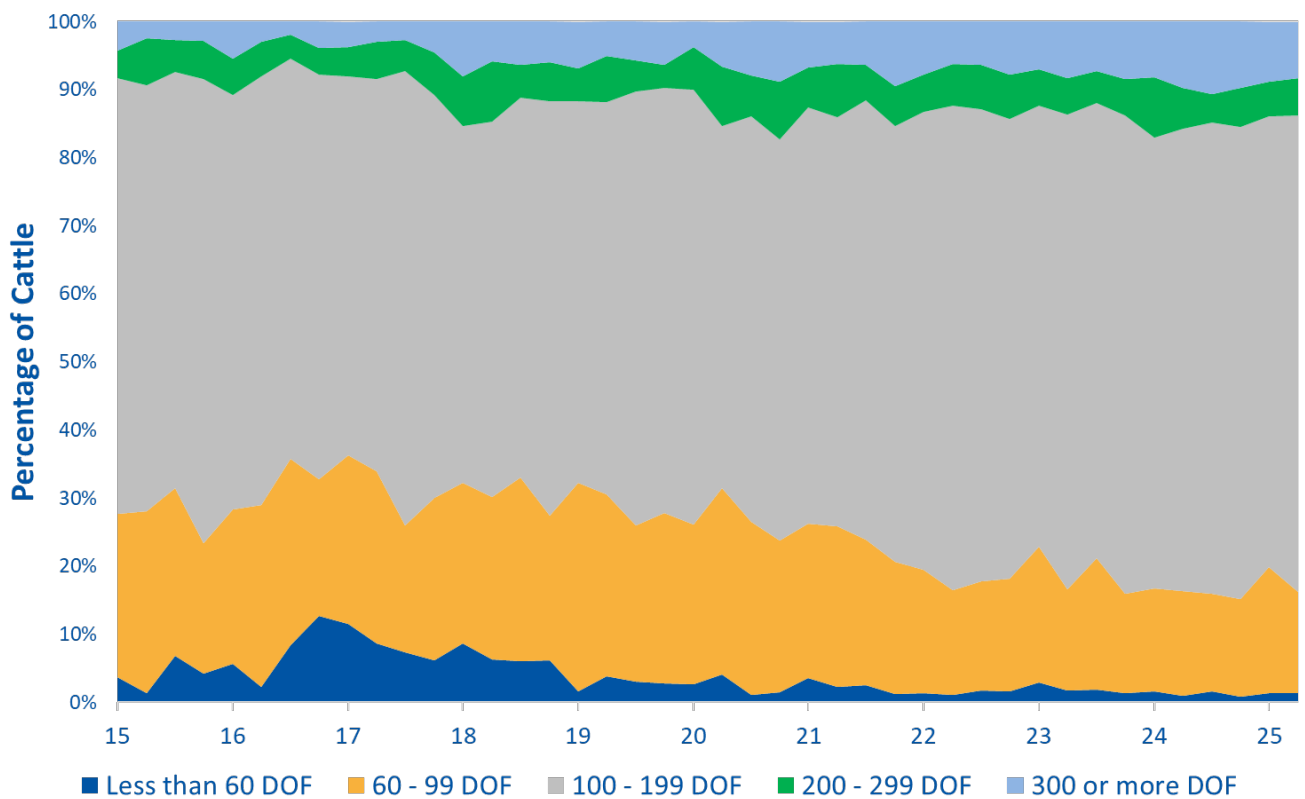


**CATTLE NUMBERS ON FEED - HISTORIC****CATTLE NUMBERS ON FEED - HISTORIC**

## QUARTERLY TURNOFF



## QUARTERLY FEEDLOT TURNOFF BY DAYS ON FEED - HISTORIC



	Numbers on Feed Jun 25	Numbers on Feed Mar 25	Numbers on Feed Jun 24
<b>New South Wales</b>			
Less than 500 head	571	1,000	<b>0</b>
500 - 1000 head	11,469	10,666	<b>10,693</b>
1001 - 10,000 head	117,680	117,207	<b>115,141</b>
over 10,000 head	342,047	313,862	<b>259,293</b>
State Total	<b>471,767</b>	<b>442,735</b>	<b>385,127</b>
<b>Queensland</b>			
Less than 500 head	10,396	6,142	<b>9,407</b>
500 - 1000 head	25,365	20,872	<b>23,073</b>
1001 - 10,000 head	220,184	209,338	<b>219,900</b>
over 10,000 head	637,335	614,838	<b>601,059</b>
State Total	<b>893,280</b>	<b>851,190</b>	<b>853,439</b>
<b>Victoria</b>			
Less than 500 head	0	0	<b>0</b>
500 - 1000 head	3,186	2,205	<b>3,065</b>
1001 - 10,000 head	31,221	30,107	<b>22,966</b>
over 10,000 head	37,763	37,301	<b>34,320</b>
State Total	<b>72,170</b>	<b>69,613</b>	<b>60,351</b>
<b>South Australia</b>			
Less than 500 head	712	646	<b>2,056</b>
500 - 1000 head	3,626	2,566	<b>1,848</b>
1001 - 10,000 head	23,242	24,506	<b>19,807</b>
over 10,000 head	43,492	43,342	<b>46,000</b>
State Total	<b>71,072</b>	<b>71,060</b>	<b>69,711</b>
<b>Western Australia</b>			
Less than 500 head	575	1,510	<b>744</b>
500 - 1000 head	4,308	2,166	<b>4,317</b>
1001 - 10,000 head	49,657	41,943	<b>27,000</b>
over 10,000 head	16,346	17,108	<b>17,503</b>
State Total	<b>70,886</b>	<b>62,727</b>	<b>49,564</b>
<b>Australia</b>			
Less than 500 head	12,254	9,298	<b>12,207</b>
500 - 1000 head	47,954	38,475	<b>42,996</b>
1001 - 10,000 head	441,984	423,101	<b>404,814</b>
over 10,000 head	1,076,983	1,026,451	<b>958,175</b>
Total	<b>1,579,175</b>	<b>1,497,325</b>	<b>1,418,192</b>

Note: Due to rounding, numbers presented throughout this document may not add up to the total

Source: ALFA/MLA, June 2025, National Accredited Feedlot Survey