

## NUMBERS ON FEED REBOUND TO NEAR-RECORD LEVELS

Australia's latest feedlot survey results, published by the Australian Lot Feeders' Association (ALFA) and Meat & Livestock Australia (MLA), show numbers of cattle on feed rising by 8.5% to 1,256,832 head in the June quarter.

ALFA's President Barb Madden said that the number of cattle on feed was the second highest on record.

"Record numbers on feed in Queensland and South Australia have pushed the national figure up – despite declines in NSW, Victoria and WA," Mrs Madden said.

Numbers on feed in Queensland and SA rose by 17.6% and 18.6% respectively, while NSW, Victoria and WA numbers dropped 1.4%, 8.3% and 19.4% across the quarter.

National capacity remained steady 1.56 million head. Utilisation rates increased from 74% in the March quarter to 81% in the June quarter.

"Despite input cost pressures and an uncertain economic outlook, high utilisation rates demonstrate continued demand for grain fed beef and confidence in the feedlot production system," Mrs Madden said.

Tim Jackson, MLA's Global Supply Analyst, said that Australian grain prices are at near-record levels and have been since the start of 2022, but were internationally competitive.

"Wheat prices for the Darling Downs traded up 2% at an average of \$408/tonne during the quarter, however this represented a 25% discount to American export HRW, compared to a historic average of 5%," Mr Jackson said.

"Even though feed prices have been rising, the relative price advantage will assist Australia's position in international markets."

Grain fed beef exports strengthened by 8% from the March quarter, and strong demand from China and South Korea balancing softer exports in Japan.



#### ALFA / MLA FEEDLOT SURVEY | April – June 2023

Mr Jackson also said feeder cattle saleyard throughput strengthened in the June quarter, while prices and average weights eased. While easing prices offered some cost relief, other input costs remained well above historic levels, and consumer confidence in key export markets was lower than year-ago levels.

Despite this, the June survey results show the continued resilience of the lot feeding industry.

“Australian grain fed beef is in demand around the world, as the increasing diversification of export destinations shows,” Mr Jackson said, “and strong growth of numbers on feed demonstrate the capacity of the lot feeding industry to meet that demand.”

#### **Media Contacts**

- Jack Johnston: MLA Corporate Affairs and Media Manager  
M: 0407 282 971
- Barb Madden: President – ALFA  
P: (02) 9290 3700

## NUMBERS ON FEED

Quarter	NSW	VIC	QLD	SA	WA	Total
<b>Jun-23</b>	337,524	58,613	758,080	50,318	52,297	<b>1,256,832</b>
<b>Mar-23</b>	342,256	63,933	644,776	42,428	64,847	<b>1,158,240</b>
<b>Jun-22</b>	335,064	61,362	708,052	36,098	54,890	<b>1,195,466</b>

## TURNOFF

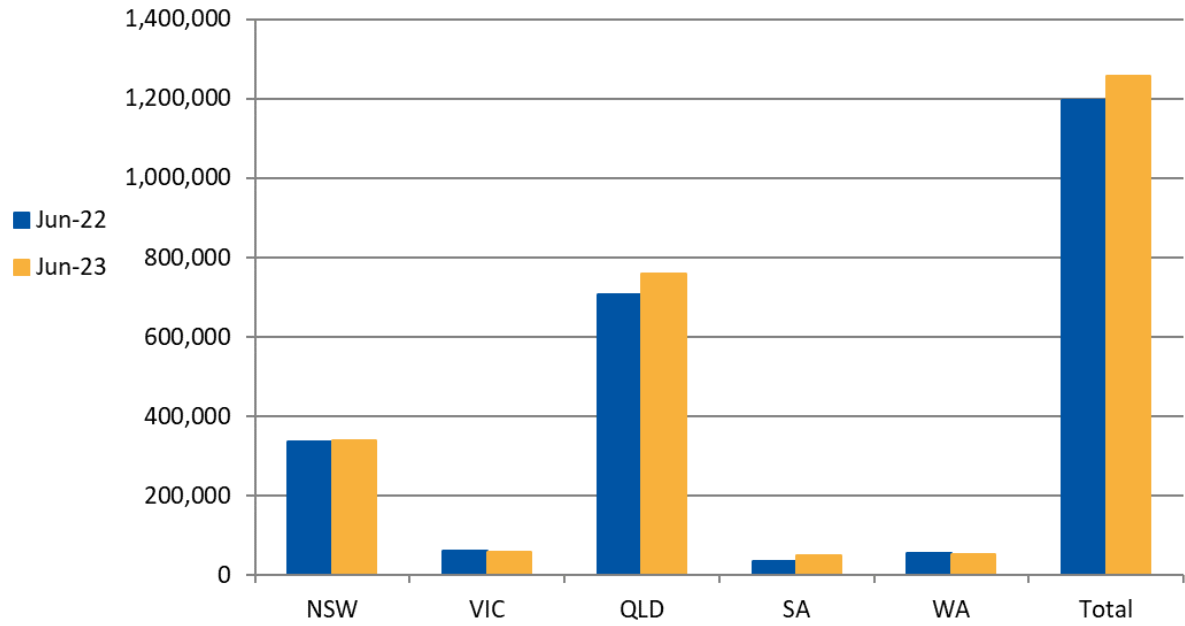
Quarter	NSW	VIC	QLD	SA	WA	Total
<b>Jun-23</b>	165,279	55,788	408,826	24,154	34,497	<b>688,544</b>
<b>Mar-23</b>	173,156	35,677	391,005	21,420	41,486	<b>662,744</b>
<b>Jun-22</b>	164,846	46,585	399,225	17,892	38,994	<b>667,542</b>

## CAPACITY

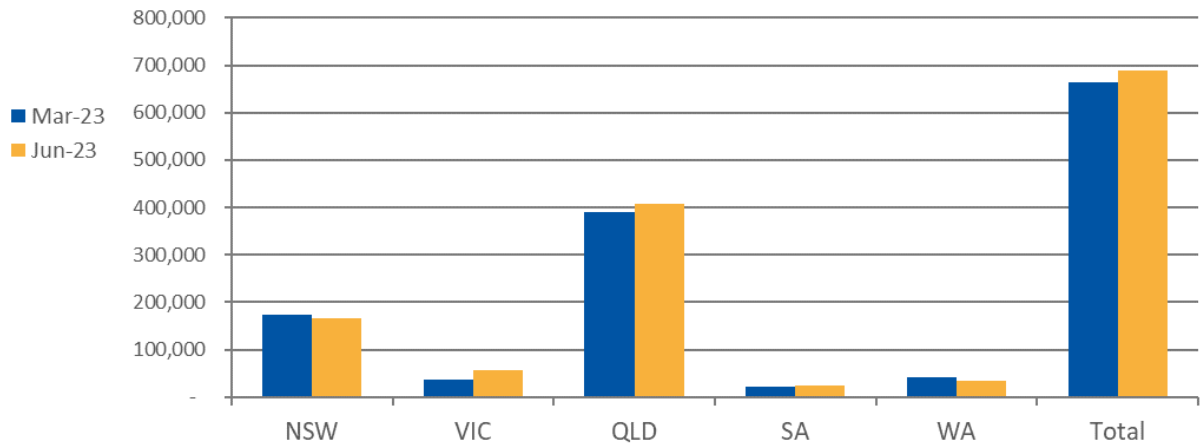
Quarter	NSW	VIC	QLD	SA	WA	Total
<b>Jun-23</b>	447,393	82,392	869,485	64,440	91,917	<b>1,555,627</b>
<b>Mar-23</b>	456,368	83,717	868,227	64,440	82,753	<b>1,555,505</b>
<b>Jun-22</b>	423,043	78,892	820,571	58,514	91,026	<b>1,472,046</b>

**Source:** Feedlot Capacity figures are provided by AUS-MEAT Limited (AUS-MEAT). AUS-MEAT owns and administers the National Feedlot Accreditation Scheme (NFAS) on behalf of ALFA and the feedlot sector. Actual Feedlot Capacity figures are reported under the NFAS.

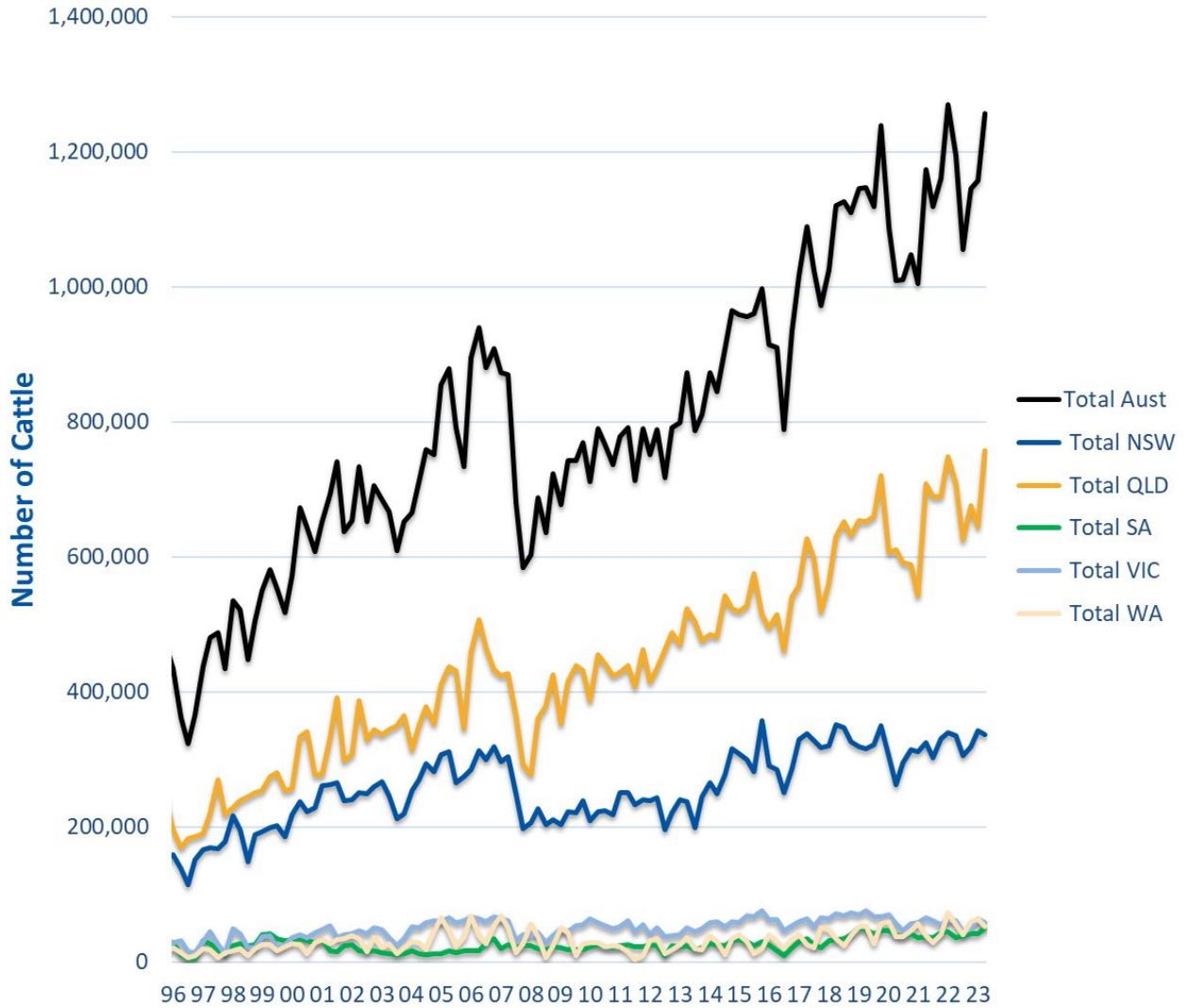
## NUMBERS ON FEED YoY



## QUARTERLY TURNOFF



## CATTLE NUMBERS ON FEED - HISTORIC



	Numbers on Feed Jun 23	Numbers on Feed Mar 23	Numbers on Feed Jun 22
<b>New South Wales</b>			
Less than 500 head	788	788	396
500 - 1000 head	10,516	8,672	9,401
1001 - 10,000 head	117,481	109,033	105,465
over 10,000 head	208,739	223,763	219,802
<b>State Total</b>	<b>337,524</b>	<b>342,256</b>	<b>335,064</b>
<b>Queensland</b>			
Less than 500 head	7,051	6,181	6,352
500 - 1000 head	15,067	12,854	14,385
1001 - 10,000 head	173,001	159,523	142,632
over 10,000 head	562,961	466,218	544,683
<b>State Total</b>	<b>758,080</b>	<b>644,776</b>	<b>708,052</b>

<b>Victoria</b>			
Less than 500 head	0	0	0
500 - 1000 head	4,148	6,530	5,880
1001 - 10,000 head	25,447	25,585	16,085
over 10,000 head	29,018	31,818	39,397
<b>State Total</b>	<b>58,613</b>	<b>63,933</b>	<b>61,362</b>
<b>South Australia</b>			
Less than 500 head	1,158	1,258	978
500 - 1000 head	235	0	4,876
1001 - 10,000 head	28,925	26,770	10,444
over 10,000 head	20,000	14,400	19,800
<b>State Total</b>	<b>50,318</b>	<b>42,428</b>	<b>36,098</b>
<b>Western Australia</b>			
Less than 500 head	1,467	2,716	1,877
500 - 1000 head	3,317	4,928	2,629
1001 - 10,000 head	32,800	41,195	40,890
over 10,000 head	14,713	16,008	9,494
<b>State Total</b>	<b>52,297</b>	<b>64,847</b>	<b>54,890</b>
<b>Australia</b>			
Less than 500 head	10,464	10,943	9,603
500 - 1000 head	33,283	32,984	37,171
1001 - 10,000 head	377,654	362,106	315,516
over 10,000 head	835,431	752,207	833,176
<b>Total</b>	<b>1,256,832</b>	<b>1,158,240</b>	<b>1,195,466</b>

Note: Due to rounding, numbers presented throughout this document may not add up to the totals.